



Accredited by the
**BRITISH
COUNCIL**
for the teaching
of English in the UK

Liddington

Wiltshire, England





Location Map



Location

PGL Liddington,
Foxhill, Swindon,
Wiltshire, SN4 0DZ

Website

www.pgl.co.uk/intliddington

Airport Transfer Times

- ✈ Bristol - 1hr 15mins
- ✈ Heathrow - 2hrs 10mins
- ✈ Gatwick - 3hrs 15mins

Eurostar Terminal Transfer Times

- 🚆 London - 3hrs 15mins

Ferry Terminal Transfer Times

- ⚓ Portsmouth - 1hr 45mins
- ⚓ Dover - 4hrs



Liddington Wiltshire, England

Highlights

- Central location - within easy reach of major cities including London
- 19 fantastic adventure activities to choose from
- 150 acres of grounds
- All en suite accommodation
- Common room with pool table, games machines, air hockey and TV

Capacity

1190

Age Range

8-17

Contents

Location Map	p2
Highlights	p3
Accommodation and Facilities	p4
Important Information	p5
Sample Timetables	p6
Sample Menu	p7
Kit List	p8
Centre Map	p9





Accommodation and Facilities

Accommodation

Purpose-built modern accommodation blocks.

Students En suite rooms sleep 4-6

Party Leaders Single or twin en suite rooms

Facilities

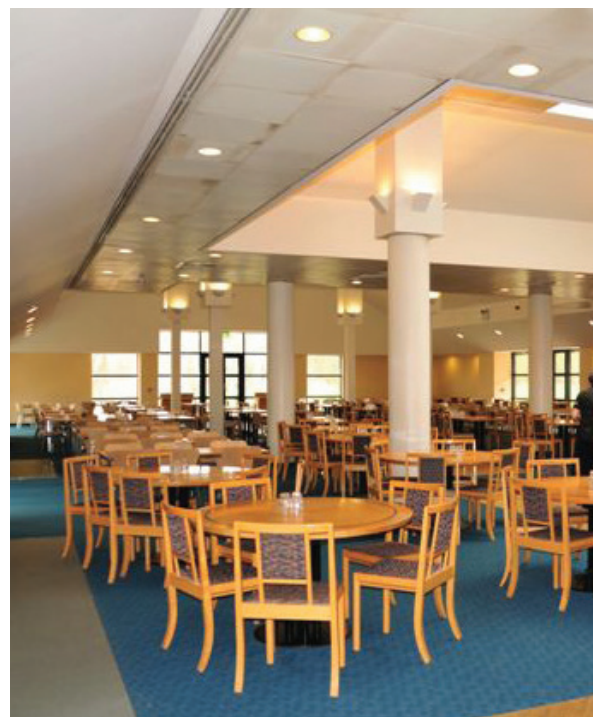
- Activity barn
- Classrooms
- Football pitch and playing fields
- Gym
- Lakes
- Leaders' bar and lounges
- Lecture theatres
- Meeting rooms
- Shop
- Sports hall

Activities

- Abseiling
- Aeroball
- Archery
- Buggy
- Building
- Canoeing
- Challenge
- Course
- Climbing
- Crate
- Challenge
- Fencing
- Giant
- Swing
- Jacob's Ladder
- Orienteering
- Problem Solving
- Raft
- Building
- Sensory
- Trail
- Survivor
- Trapeze
- Vertical
- Challenge
- Zip
- Wire

Evening Entertainment Programme

- Ambush
- Campfire
- Capture the Flag
- Disco
- Passport to the World
- PGL Sports Night
- Photo Challenge
- Robot Wars
- Quiz Show
- Snap Shot
- Splash
- Wacky Races





Important Information

Lost Property

All personal items should be clearly named. We strongly recommend that all valuables are left at home.

Laundry

A laundry service is provided for all stays longer than 8 nights. Full details will be provided on arrival at the centre. Bed linen is provided for all guests and is changed weekly. Guests will need to bring their own towels. We recommend one towel for showering and another towel for wet/dirty activities.

Cleaning

Bins are emptied everyday and rooms are cleaned thoroughly once a week.

Guest Behaviour

Please refer to our online Code of Practice document for our Code of Conduct for visiting groups.

www.pgl.co.uk/cop

First Aid

All our Activity Staff hold an Emergency First Aid Certificate and a number of Senior Staff hold a First Aid at Work Certificate. This allows the immediate application of any first aid treatment required. Cold storage for any medication can be arranged if required.

Insurance

We are able to arrange insurance cover for visiting groups through our existing provider. Please contact us for details.

Safety

We are proud of our excellent safety record which is due to the diligence and care of our staff. For your peace of mind, a summary of our safety management systems is available in our online Code of Practice document. All our centres are inspected and accredited by BAPA, the British Activity Providers Association, an industry body which sets the standards for quality and safety. Where required, our activities are inspected and approved by the Adventure Activities Licensing Authority (AALA). Annually updated risk assessments are also available for all our activity centres and we comply with the latest government guidelines on the health and safety of pupils on educational visits.

www.pgl.co.uk/safety

For useful resources to help parents and tour leaders prepare for a PGL trip please see our guides at www.pgl.co.uk/intresources



Sample Timetables

English Language Programme fixed - 14 nights*

	Day 1	Day 2	Day 3	Day 4	Day 5	Day 6	Day 7
AM	Travel	Testing & Induction English Lessons	English Lessons	Full Day Excursion to the city of London	English Lessons	English Lessons	English Lessons
PM	Arrival & settling in	Giant Swing Jacob's Ladder	Canoeing Vertical Challenge		Problem Solving Survivor	Excursion to the city of Oxford	Orienteering Abseiling
Evening	Ambush	Campfire	Quiz Show	Passport to the World	Capture the Flag	Splash	Disco

	Day 8	Day 9	Day 10	Day 11	Day 12	Day 13	Day 14
AM	Buggy Building Zip Wire	Fencing Sensory Trail	Challenge Course Climbing	Full Day Excursion to the city of Bath	Archery Trapeze	Excursion to the town of Windsor	Raft Building
PM	Canoeing	English Lessons	English Lessons		English Lessons	English Lessons	English Lessons
Evening	Campfire	Wacky Races	Splash	Snap Shot	Quiz Show	Robot Wars	Disco

*This programme can also be 7 nights duration.

Tailor-Made English Experience

	Day 1	Day 2	Day 3	Day 4	Day 5	Day 6	Day 7
AM	Travel	Archery Trapeze	Full Day Excursion to the city of Oxford	English Lessons	Full Day Excursion to the city of Plymouth	Full Day Excursion to the city of London	Excursion to the Royal Borough of Windsor
PM	Arrival & settling in	Giant Swing Jacob's Ladder		Canoeing			Orienteering Abseiling
Evening	Ambush	Campfire	Quiz Show	Splash	Capture the Flag	Dinner in London	Disco

Adventure Activities Programme

	Day 1	Day 2	Day 3	Day 4	Day 5	Day 6	Day 7
AM	Travel	Archery Sensory Trail	Orienteering Abseiling	Raft Building	Vertical Challenge Giant Swing	Canoeing	Jacob's Ladder
PM	Arrival & settling in	Crate Challenge Problem Solving	Challenge Course Zip Wire	Aeroball Buggy Building	Climbing Abseiling	Orienteering Fencing	Survivor Trapeze
Evening	Splash	Passport to the World	Wacky Races	Capture the Flag	Campfire	Quiz Show	Disco



Sample Menu

Please see below our sample menu which is delivered at all our PGL centres. All menus are designed with health and nutrition in mind and based on a traditional British menu. All guests have unlimited access to the salad bar and fruit during meal times. Please be aware that menus are a sample only and are subject to change.

Reach your

FULL PGL POTENTIAL

with our freshly prepared menu

	MONDAY	TUESDAY	WEDNESDAY	THURSDAY	FRIDAY	SATURDAY	SUNDAY
<p>BREAKFAST</p>	Sausages Plant-based sausages (v) Scrambled eggs Mushrooms Baked beans Tomatoes	Sausages Plant-based sausages (v) Hash brown Mushrooms Baked beans Tomatoes	Bacon Plant-based sausages (v) Scrambled eggs Mushrooms Baked beans Tomatoes	Sausages Plant-based sausages (v) Scrambled eggs Mushrooms Baked beans Tomatoes	Bacon Plant-based sausages (v) Hash brown Mushrooms Baked beans Tomatoes	Sausages Plant-based sausages (v) Scrambled eggs Mushrooms Baked beans Tomatoes	Bacon Plant-based sausages (v) Hash brown Mushrooms Baked beans Tomatoes
	<p>AVAILABLE EVERY DAY Choice of cooked & continental breakfast</p> <p>Continental options: Choice of cereals Porridge Assorted yoghurts White or brown toast & jam</p>						
<p>LUNCH</p>	Hot dog & wedges	Loaded jacket	Filled roll or wrap	Pasta & garlic bread	Burger, relish & skinny fries	Fajitas, tortilla chips & dips	Filled roll or wrap
	<p>AVAILABLE EVERY DAY Homemade soup of the day & roll Choice of meat, vegetarian or vegan option</p>						
<p>DINNER</p>	Mains Crispy chicken breast pieces with sweet & sour sauce Chickpea, lentil & coconut curry, naan (v) Vegetable Kiev (v) Sides Chips, rice, broccoli, carrots Dessert Doughnut	Mains Beef bolognese Piri Piri chicken Butternut squash & vegetable biryani (v) Sides Rosemary potatoes, pasta, green beans, roasted Mediterranean vegetables Dessert Raspberry ice cream cake	Mains Chicken & vegetable tikka & naan Fish fingers Feta & roasted vegetable lattice (V) Sides Chips, rice, peas, carrots Dessert Chocolate crispy cake	Mains Sausages & onion gravy Chicken & vegetable pie Quorn & vegetable chow mein (v) Sides Mashed potato, mixed vegetables Dessert Apple crumble & cream	Mains Battered fish fillet & tartare sauce Meatballs in tomato sauce Lentil bolognese (v) Sides Chips, spaghetti, peas, carrots Dessert Ice cream	Mains Meat pizza Margherita pizza (v) Chicken Kiev Vegetable & mushroom pilaf (v) Sides Cajun fries, green beans, broccoli Dessert Profiteroles & chocolate sauce	Mains Roast dinner, Yorkshire pudding & gravy Mac & cheese (v) Sides Roast potatoes, roasted root vegetables Dessert Waffles & strawberry sauce
	<p>AVAILABLE EVERY DAY Choice of meat, vegetarian or vegan option</p>						

Please note: this menu is subject to product availability and may change.

May 2021 ALUK

Healthy Choices

Available daily

Fresh fruit - every mealtime

Unlimited salad from our salad bar - lunch & dinner

Unlimited Drinks

Coffee, tea, chilled squash

Dietary & Allergens

We can cater for a wide variety of food requirements when notified in advance, including allergies, intolerances, medical conditions, and those specified by culture and religion.

It may not always be possible to cater for more specific diets such as weight management programmes, organic etc.

Please ensure that all items are named.

CLOTHING

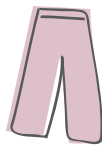
Clothes are likely to suffer wear and tear and also get dirty and/or wet therefore you should bring several changes of old clothes for doing activities.



Your arms will need to be covered to do some activities.

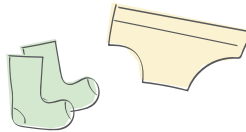
- T-shirts
 - Long sleeved shirt/T-shirts
 - Waterproof jacket
 - Fleeces/jumpers
- Tops & jackets**

- Trousers or leggings**
but not jeans as they get heavy and cold when wet



- Underwear & socks**
- Your socks will need to cover your ankles to do some activities.*

- 1 or 2 sets of **clothes for the evening**



- Suitable **nightwear**

Please note: Bedding (a duvet and pillow) are provided for all international guests.

TRAVELLING IN THE...



...SUMMER?

- Shorts
- Baseball cap/sun hat
- Sunscreen



...WINTER?

- Warm coat
- Hat and gloves
- Torch

Lost property

We recommend you write a list of what you pack to check before you come home. If you do leave anything behind, please contact your party leader who will contact PGL. Postage will be charged for returning lost items.

FOOTWEAR

- 2 pairs** of trainers
 - 1 for activities
 - 1 old pair for watersports

- 1 pair of dry shoes**
for evening activities



OTHER ITEMS

- 2 towels**
 - 1 for showering
 - 1 old one for activities

- Reusable **drinks bottle**

- Small **rucksack/bag**

- Labelled **bin bag** for wet and dirty clothing

- Washbag** including soap, shampoo, toothbrush and toothpaste (please do not bring Aerosols)



PLEASE DO NOT BRING

- ✗ Electrical devices
- ✗ Computer games
- ✗ Jewellery/valuables
- ✗ Aerosols

If you bring your **mobile phone**, please note, it is not covered by our insurance.





Key

- | | | | |
|------------------|-----------------|--------------------|-------------|
| Abseiling | Fencing | Sensory Trail | Toilets |
| Aeroball | Giant Swing | Survivor | Dining Room |
| Archery | Jacob's Ladder | Trapeze | Bar |
| Canoeing | Problem Solving | Vertical Challenge | |
| Challenge Course | Buggy Build | Zip Wire | |
| Climbing | Raft Building | | |
| Crate Challenge | | | |